



OPEN POCKET

Washer/Extractors



U.S.A.

ISO 9001:2015 Certified
(Quality Management System)

All Braun Products are Proudly
Manufactured in the U.S.A.

gabraun.com

OPEN POCKET WASHER/EXTRACTORS



FACTS:

- There are more Braun Open Pocket Systems in the industry than all others combined!
- Most Braun 20 to 25-year-old machines are still in service and running like new.
- These machines offer the largest processing capacity in the industry per allocation of floor space.

Braun Open Pocket Washer/Extractors feature two-way tilting for safe, easy loading and unloading. Braun makes the most of G-forces in the extraction process with increased cylinder diameters, providing maximum, efficient water removal.

Whichever model meets your needs, Braun's design engineers will smoothly integrate the new machines into your plant layout to reduce the number of full time employees while optimizing material flow. Braun's team will use its years of integration expertise to assist you in developing the most efficient laundry system available today.

Braun 450 N2 OP

The washing capacity of a 450-pound with a width of just 89 inches.

Braun Washer/Extractors with two-way tilting can be networked into a fully automated laundry system. By linking Braun Washer/Extractors to one of Braun's material handling solutions and Braun Pass-Thru Dryers, your facility can be easily managed by one operator from a centrally located workstation running on Braun's Windows®-based Data Management software. This can all be done while providing a safe operating environment for the employee.

Open Pocket machines are mounted on Braun's Neutron Suspension to isolate vibration from the workspace. Because of the unsurpassed vibration dampening of the neutron suspension, Braun Open Pockets can be installed without a foundation, even on suitable upper floors.

This promotes less wear on major end components and provides outstanding durability and machine longevity.



**Fully Automated
Open Pocket
Washer/Extractor
System**

SINGLE-MOTOR DRIVE

Standard on all Braun Open Pocket Washer/Extractors, Single-Motor Drive (SMD) is the latest advance in energy-efficient drive technology. Using only one motor, a Braun Open Pocket is economical to operate, easy to maintain and offers greater flexibility in program options.



Braun 650 N2 Washer/Extractor

Will process

675-pounds in the same space as the industry's average 400-pound machine, and the 450N2 fits in the same space as most 200-pound machines.

A Braun Open Pocket with SMD ramps up to full speed smoothly — without stepping, without fixed speeds — to programmable extraction speeds up to 625 rpm. With smooth ramp up, SMD allows the machine to pin the goods and then go into higher extract speeds, removing more water quickly before sending the goods onto the dryer, ironer or tunnel finisher. More thoroughly extracted goods means shorter dryer times and lower natural gas costs. Additionally, it means finishing operations will require less cycle time and less energy.

Using fewer and less complicated parts, a Braun Open Pocket with SMD promises less down time and dollars spent on maintenance.

A Braun Open Pocket equipped with Single Motor Drive offers the most in washer/extractor reliability and performance.

Braun Open Pocket Washer/Extractors were designed to smoothly integrate into various plant layouts. These machines offer the largest processing capability in the industry per allocation of floor space. This is significant as operators look to maximize their productivity in their existing facilities. They are engineered for ease of use, space allocation limitation concerns and ergonomics.

A unique feature to these machines is that the suspension has been redesigned to reduce the washer/extractor's profile and to provide a reduction in vibration.

Each provides versatility, outstanding performance, efficiency and reliability, with the washing capacity of a 250-pound Open Pocket in a narrow width of just 82 inches, a 450-pound Open Pocket in a narrow width of 89 inches, or a 650 -pound Open Pocket in a narrow width of 106 inches.

LOAD BALANCING

Braun Washer/Extractors are designed in such a way that the load balances itself prior to moving into the extraction phase. By slowly ramping up to a programmable extraction speed, Braun Washer/Extractors evenly distribute the wet goods against the cylinder, eliminating the need for artificial counterbalances. This balance method results in consistent thickness of goods throughout the cylinder, delivering a uniformly extracted load, free of wet clusters which greatly hinder the efficiency of your drying and finishing areas.

OPEN POCKET WATER RECLAMATION SYSTEM (OPTION)

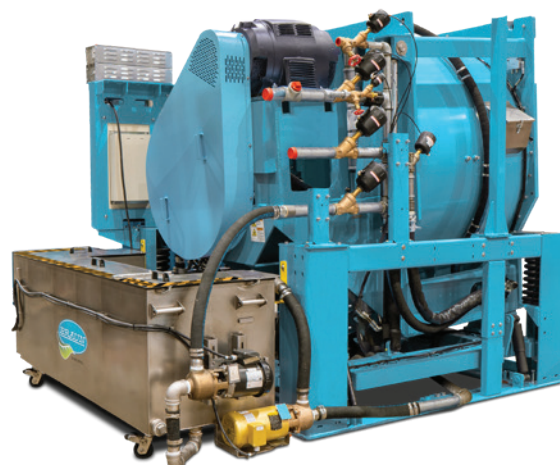
The system tank recovers:

- 173 gallons of water per load - 450 lb.
- 225 gallons of water per load - 650 lb.

The water typically comes from the final rinse of the previous load, which is then added to the initial fill cycle of the next load. This system can be retrofitted on any touchscreen-controlled open pocket washer. The reclaim tank is standard with quick disconnect fittings (hose and electrical cables), and caster wheels for easy access to the washer for routine maintenance.



Braun 250 N2



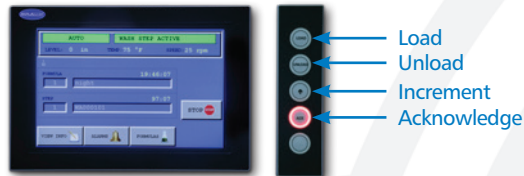
OPEN POCKET

STANDARD FEATURES

- Two-way tilt for safe load handling
- Mounted on Braun Neutron Suspension for a vibration-free workplace
- Automatically balanced load in extraction eliminates costly wet clusters
- Can be easily integrated into a fully-automated, complete laundry system

TOUCH SCREEN CONTROLS

Standard on all Braun Open Pocket machines, touch screen controls are simple, intuitive, and easy to use.



SPECIFICATIONS

For detailed equipment specifications please consult with your Braun Regional Sales Manager or contact us by email at equipmentspecifications@gabraun.com



ISO 9001:2015 CERTIFIED
(Quality Management System)

G.A. Braun, Inc.
79 General Irwin Boulevard
N. Syracuse, NY 13212

Mail to:
P.O. Box 3029
Syracuse, NY 13220-3029

Phone
1-800-432-7286

Fax
(315) 475-4130

Parts Help Desk
1-800-432-7286 X 1

Service Help Desk
1-800-432-7286 X 2



U.S.A.

All Braun Products are Proudly
Manufactured in the U.S.A.