



MATERIAL HANDLING

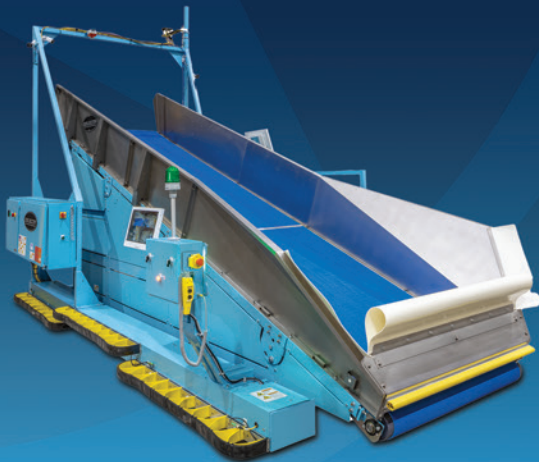
Shuttles



Nesting Shuttle



Loose Goods Shuttle



Manual Ride-On Shuttle



SafeLoad Shuttle Systems®



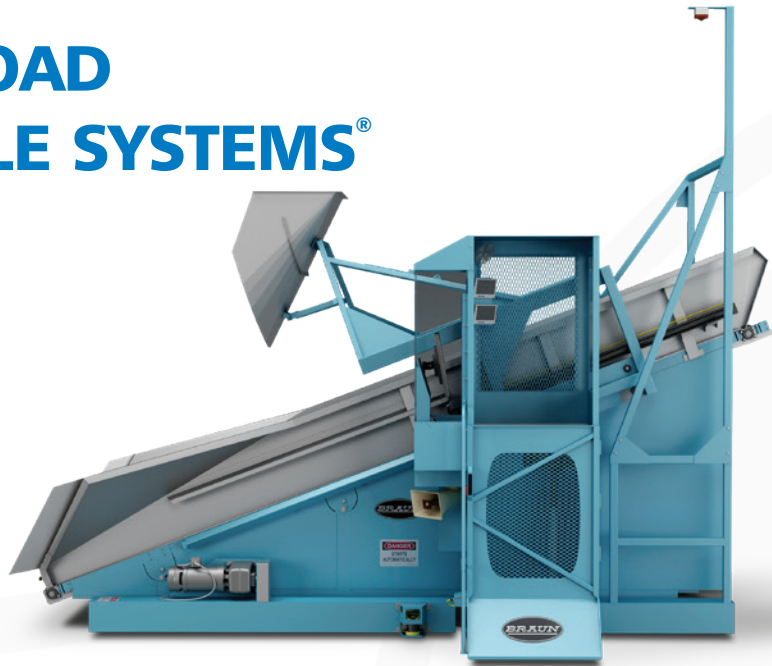
U.S.A.

ISO 9001:2015 Certified
(Quality Management System)

All Braun Products are Proudly
Manufactured in the U.S.A.

gabraun.com

SAFELOAD SHUTTLE SYSTEMS®



BRAUN SAFELOAD SHUTTLE SYSTEMS®

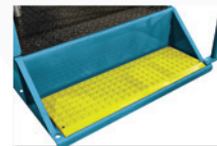
These systems significantly enhance wash room safety! The chute loading capability provides operators a safe means for loading and unloading open pocket washers and dryers, virtually eliminating hazards associated with semi-automated and automated wash alleys. SafeLoad Shuttles with chute loading feature a hydraulically controlled loading device. Mounted onto the shuttle, it allows the operator to engage it into the washer door opening. Once engaged, the operator can then control the goods bag to open and automatically drop through the loading device into the washer. Loading washers has been determined to present the greatest safety risk in the semi-automated wash floor. This system eliminates the need to manually push bags into a washer extractor.

This system is available with a "cockpit" for ride-on operation, or with a remote control panel. Both facilitate continuous processing.



SAFETY DEVICES

- On-board video cameras for monitoring travel blind spots!
- The control platform is guarded by multiple-redundant safety interlock systems
- Touch screen controls
- Shuttle Safety Mat (for ride-on configurations) This safety mat deactivates shuttle movement when it detects personnel outside the operator control cockpit and anyone on the cockpit step.



Shuttle Safety Mat

Safety Rated Door Interlock



Foot Pedal Interlock

SafeLoad Shuttle Systems' chute loading capability significantly enhances wash room safety! (Also available in a non-chute load configuration and non ride-on configuration).

MANUAL RIDE-ON SHUTTLE



Manual Ride-On Shuttle incorporates a travel platform and remote junction boxes to give the operator control to complete all required functions in the transfer of goods.

MANUAL RIDE-ON SHUTTLE

The manual ride-on shuttle incorporates a travel platform and remote junction boxes to give the operator control to complete all required functions in the transfer of goods.

The shuttle inverter and PLC work with the operator's manual functions to provide safety, reliability, and ease of use.

The main travel control for the shuttle is a joystick mounted on the travel platform's control panel, allowing variable speed input to the shuttle and therefore greater control of the equipment.

The platform includes a recessed foot pedal that allows functions from the shuttle joystick to control shuttle travel. When the foot pedal is not activated, travel of the shuttle will not be allowed. The foot pedal is in an ergonomic position in which the operator can be facing either the washer or dryer and still be able to depress the pedal and control shuttle functions.

The shuttle status interface is also located on the travel platform. Included in the panel are monitors that relay video signal from the opposite side of the shuttle to the operator. The video monitors allow the operator to clearly see any obstructions on the opposite side of the shuttle and down the conveyor bed. Two push buttons are also included on the control panel, one for a manual horn and the other an Emergency Stop to activate the Safety Relays on the shuttle. The E-Stop will activate the safety relays and will immediately stop any movement on the shuttle.

The shuttle comes standard with collision bumpers on all bottom external edges of the shuttle. When contacted, the bumpers will bring all functions of the shuttle to an abrupt stop. Motion lights and manual horns allow for visual and audio indication of shuttle movement. The lights mounted on the festoon are visible from 360 degrees around the shuttle.

Two hand control for shuttle telescope will keep an operator out of any hazardous positions during shuttle Telescope operation.



SHUTTLES AND MATERIAL HANDLING ELEVATORS



Loose Goods Shuttles

These shuttle systems are engineered for the Braun 200 lb., 450 lb. and 650 lb. Automated Open Pocket Washer/Extractor Systems.

BRAUN LOOSE GOODS SHUTTLES

Available in the following models:

OPSH44 for 200-500 lb. wash floors

OPSH66 for 500-700 lb. wash floors

They are engineered for the Braun 200 lb., 450 lb. and 650 lb. Automated Open Pocket Washer/Extractor Systems with auto or manual functionality. The shuttle automatically travels to the washer/extractor, aligns, and accepts goods from the tilting machine. The shuttle then travels to the next available dryer where it automatically advances the goods and loads the dryer.



Bumper and tape switch safety devices →



Nesting Shuttles Can meet the demands of any plant layout.

NESTING SHUTTLES

Available for Braun's 100–150 lb. and 200–220 lb. batch tunnel washing systems.

Braun Nesting Shuttles store and transport extracted cakes from the extraction press to the dryer.

These automated delivery systems can include single or multiple elevating shuttles, depending upon individual needs.

SMOOTH, ERROR-FREE TRANSFER OF GOODS

- The ergonomics of loading and unloading Braun tunnels and dryers is greatly enhanced.
- Braun's inverter driven smart shuttle system basically eliminates much of the heavy work; providing a safe, smooth, error-free and complete transfer of goods.

SAFETY DEVICES

- Bumper and tape switch safety devices are standard on Braun Loose Goods and Nesting Shuttles. Scanners are available as an option. They ensure that shuttle hazardous motion will come to a complete stop in accordance with OSHA and ANSI safety requirements.

SPECIFICATIONS

For detailed equipment specifications please consult with your Braun Regional Sales Manager or contact us by email at equipmentspecifications@gabraun.com



ISO 9001:2015 CERTIFIED
(Quality Management System)

G.A. Braun, Inc.
79 General Irwin Boulevard
N. Syracuse, NY 13212

Mail to:
P.O. Box 3029
Syracuse, NY 13220-3029

Phone
1-800-432-7286

Fax
(315) 475-4130

Parts Help Desk
1-800-432-7286 X 1

Service Help Desk
1-800-432-7286 X 2



U.S.A.

All Braun Products are Proudly
Manufactured in the U.S.A.